



Fastmarkets Dashboard  
User Guide

Exchange Market Data

V2.1.8526

31<sup>st</sup> July 2021

# Table of Contents

INTRODUCTION.....	3
EXCHANGE PRICES IN PRE-CONFIGURED WIDGETS.....	4
• LME Official Prices and LME Unofficial Prices widgets.....	4
• CME Settlement Prices widget and SHFE Close Prices Widget.....	5
• Exchange Data Report widget .....	5
EXCHANGE PRICES IN THE MULTI PRICE TABLE WIDGET .....	9
EXCHANGE PRICES IN THE HISTORIC DATA TABLE WIDGET.....	11
EXCHANGE PRICES IN THE PRICE CHART WIDGET.....	12
EXCHANGE PRICES IN THE LIVE CHART WIDGET.....	13
FURTHER HELP.....	16

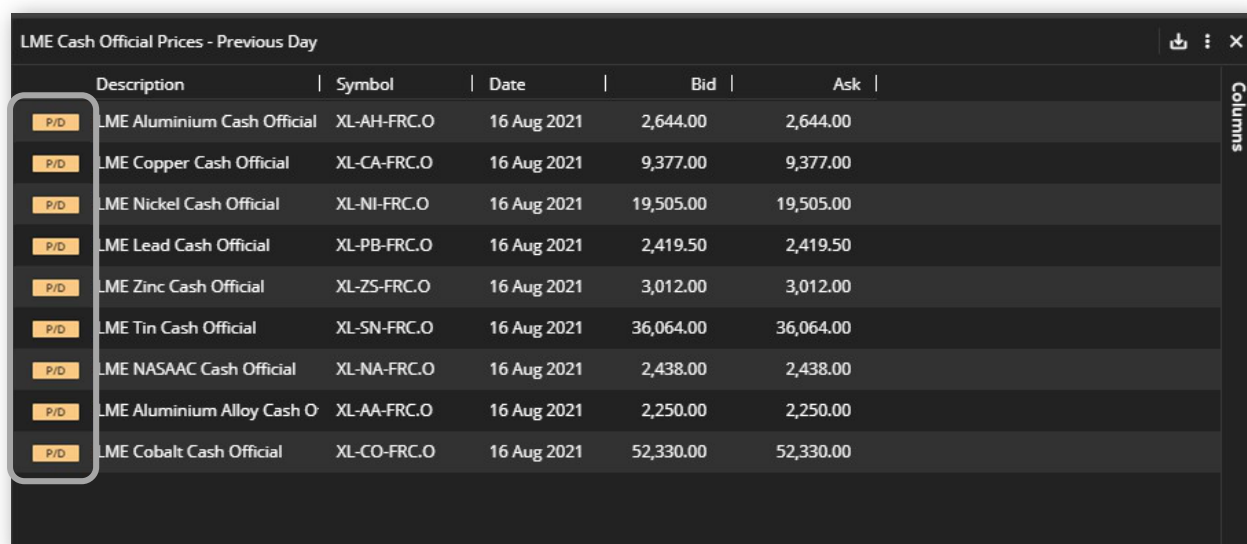
## INTRODUCTION

The Fastmarkets Dashboard provides the ability to view exchange and physical prices. Depending on your access it is possible to display previous day or delayed prices from the London Metal Exchange (LME), Chicago Mercantile Exchange (CME) and Shanghai Futures Exchange (SHFE). Based on the licensing terms and conditions for each exchange the below table provides an overview of the delay classes and exchange fees for this pricing:

Delay class	London Metal Exchange (LME)	Chicago Mercantile Exchange (CME)	Shanghai Futures Exchange (SHFE)
Delayed	Not yet available	10 mins (free)	30 mins (free)
Previous Day	After midnight GMT	Not available	After midnight UTC

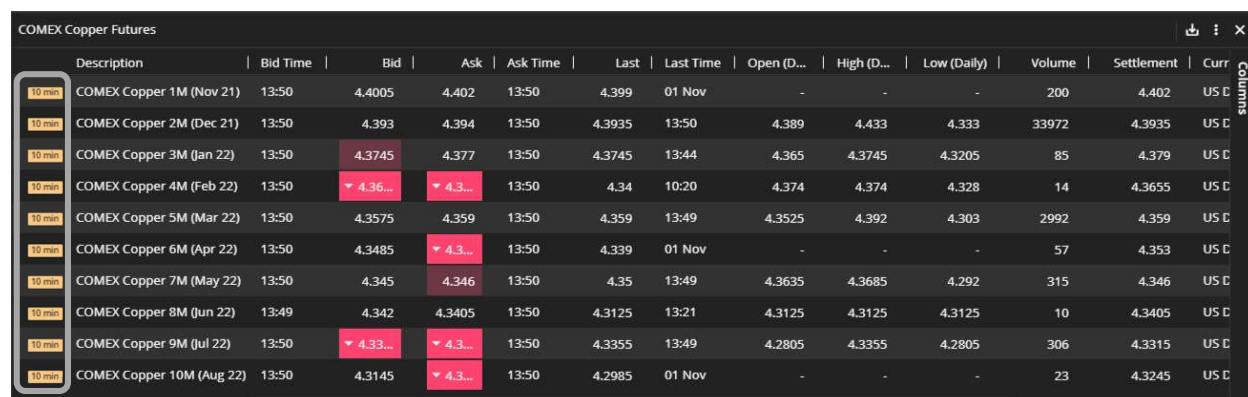
Please note all exchange pricing is displayed in Coordinated Universal Time (UTC).

The Multi Price Table displays a delay class icon in the first left column denoting which access you are subscribed to. In the example below the delay class is P/D which stands for Previous Day.



Description	Symbol	Date	Bid	Ask
P/D LME Aluminium Cash Official	XL-AH-FRC.O	16 Aug 2021	2,644.00	2,644.00
P/D LME Copper Cash Official	XL-CA-FRC.O	16 Aug 2021	9,377.00	9,377.00
P/D LME Nickel Cash Official	XL-NI-FRC.O	16 Aug 2021	19,505.00	19,505.00
P/D LME Lead Cash Official	XL-PB-FRC.O	16 Aug 2021	2,419.50	2,419.50
P/D LME Zinc Cash Official	XL-ZS-FRC.O	16 Aug 2021	3,012.00	3,012.00
P/D LME Tin Cash Official	XL-SN-FRC.O	16 Aug 2021	36,064.00	36,064.00
P/D LME NASAAC Cash Official	XL-NA-FRC.O	16 Aug 2021	2,438.00	2,438.00
P/D LME Aluminium Alloy Cash O	XL-AA-FRC.O	16 Aug 2021	2,250.00	2,250.00
P/D LME Cobalt Cash Official	XL-CO-FRC.O	16 Aug 2021	52,330.00	52,330.00

In this example, 10 minute COMEX (CME) Copper delayed data is displayed with the delay time according to the exchange licensing terms (this will vary between exchanges, see above table):



Description	Bid Time	Bid	Ask	Ask Time	Last	Last Time	Open (D...	High (D...	Low (Daily)	Volume	Settlement	Curr
10 min COMEX Copper 1M (Nov 21)	13:50	4.4005	4.402	13:50	4.399	01 Nov	-	-	-	200	4.402	US C
10 min COMEX Copper 2M (Dec 21)	13:50	4.393	4.394	13:50	4.3935	13:50	4.389	4.433	4.333	33972	4.3935	US C
10 min COMEX Copper 3M (Jan 22)	13:50	4.3745	4.377	13:50	4.3745	13:44	4.365	4.3745	4.3205	85	4.379	US C
10 min COMEX Copper 4M (Feb 22)	13:50	4.36...	4.3...	13:50	4.34	10:20	4.374	4.374	4.328	14	4.3655	US C
10 min COMEX Copper 5M (Mar 22)	13:50	4.3575	4.359	13:50	4.359	13:49	4.3525	4.392	4.303	2992	4.359	US C
10 min COMEX Copper 6M (Apr 22)	13:50	4.3485	4.346	13:50	4.339	01 Nov	-	-	-	57	4.353	US C
10 min COMEX Copper 7M (May 22)	13:50	4.345	4.346	13:50	4.35	13:49	4.3635	4.3685	4.292	315	4.346	US C
10 min COMEX Copper 8M (Jun 22)	13:49	4.342	4.3405	13:50	4.3125	13:21	4.3125	4.3125	4.3125	10	4.3405	US C
10 min COMEX Copper 9M (Jul 22)	13:50	4.33...	4.3...	13:50	4.3355	13:49	4.2805	4.3355	4.2805	306	4.3315	US C
10 min COMEX Copper 10M (Aug 22)	13:50	4.3145	4.3...	13:50	4.2985	01 Nov	-	-	-	23	4.3245	US C

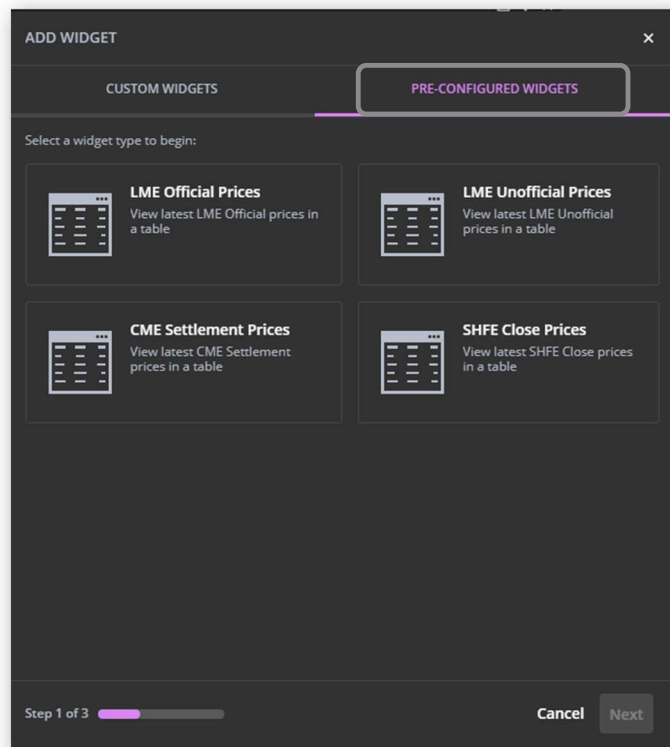
## EXCHANGE PRICES IN PRE-CONFIGURED WIDGETS

The Dashboard provides the ability to view pricing from the LME, CME Group and SHFE in pre-configured widgets.

- LME Official Prices widget
- LME Unofficial Prices widget
- CME Settlement Prices widget
- SHFE Close Prices widget

Click on the Add Widget icon and select **PRE-CONFIGURED WIDGETS**.

These pre-configured widgets make finding key reference exchange pricing quick and easy with fixed contracts and fields.



### **LME Official Prices and LME Unofficial Prices widgets**

The LME Official Prices widget and LME Unofficial Prices widget provide an overview of previous day key exchange pricing for cash, three months, 15 months and the first three December prompt dates (where applicable) for the following contracts:

CA – Copper; AH – Aluminium; NI – Nickel; ZS – Zinc; PB – Lead; SN – Tin; AA – Aluminium Alloys; CO – Cobalt; and NA – Nasaac (North American Special Aluminum Alloy Contract)

The LME Official Prices widget (immediately below) and the LME Unofficial Prices widget will appear as they do in the following screenshots. The date field for the report can be found at the top of the widget.

LME Officials (USD/Tonne) — 6 Aug 2021												
Metal	Cash		3 Months		15 Months		Dec 1		Dec 2		Dec	
	Bid	Ask	Bid	Ask	Bid	Ask	Bid	Ask	Bid	Ask	Bid	
CA	9,529.50	9,529.50	9,549.50	9,549.50	-	-	9,546.50	9,546.50	9,500.50	9,500.50	9,420.50	
AH	2,618.50	2,618.50	2,621.50	2,621.50	-	-	2,581.50	2,581.50	2,546.50	2,546.50	2,526.50	
NI	19,533.00	19,533.00	19,550.00	19,550.00	-	-	19,579.00	19,579.00	19,604.00	19,604.00	19,634.00	
ZS	3,006.00	3,006.00	3,010.50	3,010.50	-	-	2,993.00	2,993.00	2,934.00	2,934.00	2,877.50	
PB	2,362.00	2,362.00	2,331.00	2,331.00	-	-	2,273.50	2,273.50	2,243.50	2,243.50	2,223.50	
SN	36,065.00	36,065.00	34,771.00	34,771.00	31,786.00	31,786.00	-	-	-	-	-	
AA	2,228.00	2,228.00	2,224.00	2,224.00	-	-	2,224.00	2,224.00	-	-	-	
CO	52,390.00	52,390.00	52,500.00	52,500.00	54,365.00	54,365.00	-	-	-	-	-	
NA	2,409.00	2,409.00	2,395.00	2,395.00	-	-	2,395.00	2,395.00	-	-	-	

### CME Settlement Prices widget and SHFE Close Prices widget

The CME Settlement Prices widget displays settlement prices (and will update depending on your level of access) for the first four CME (formerly Comex) gold, copper and silver futures contracts as well as (former NYMEX) busheling, HRC steel, platinum and palladium.

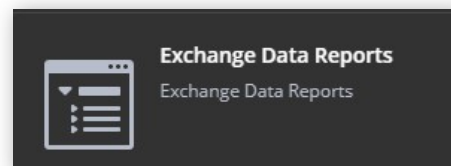
The SHFE Close Prices widget displays the latest closing prices for the first month SHFE aluminium, copper, nickel, lead, tin and zinc futures contracts.

CME Settlement — 6 Aug 2021				SHFE Closing (CNY/Tonne) — 6 Aug 2021	
Description	Month	Settlement Price	Instrument Base	Description	Close
COMEX Gold 1M (Aug 21)	Aug 21	1,760.00	USD / Troy ounce	SHFE Aluminium 1M (Aug 21)	19,940.00
COMEX Gold 2M (Sep 21)	Sept 21	1,760.30	USD / Troy ounce	SHFE Copper 1M (Aug 21)	70,300.00
COMEX Gold 3M (Oct 21)	Oct 21	1,761.10	USD / Troy ounce	SHFE Nickel 1M (Aug 21)	145,430.00
COMEX Gold 4M (Dec 21)	Dec 21	1,763.10	USD / Troy ounce	SHFE Lead 1M (Aug 21)	15,730.00
COMEX Copper 1M (Aug 21)	Aug 21	4.35	USD / Pound	SHFE Tin 1M (Aug 21)	231,800.00
COMEX Copper 2M (Sep 21)	Sept 21	4.35	USD / Pound	SHFE Zinc 1M (Aug 21)	22,535.00
COMEX Copper 3M (Oct 21)	Oct 21	4.34	USD / Pound		
COMEX Copper 4M (Nov 21)	Nov 21	4.34	USD / Pound		
COMEX Silver 1M (Aug 21)	Aug 21	24.31	USD / Troy ounce		
COMEX Silver 2M (Sep 21)	Sept 21	24.33	USD / Troy ounce		
COMEX Silver 3M (Oct 21)	Oct 21	24.34	USD / Troy ounce		
COMEX Silver 4M (Dec 21)	Dec 21	24.38	USD / Troy ounce		

### Exchange Data Report widget

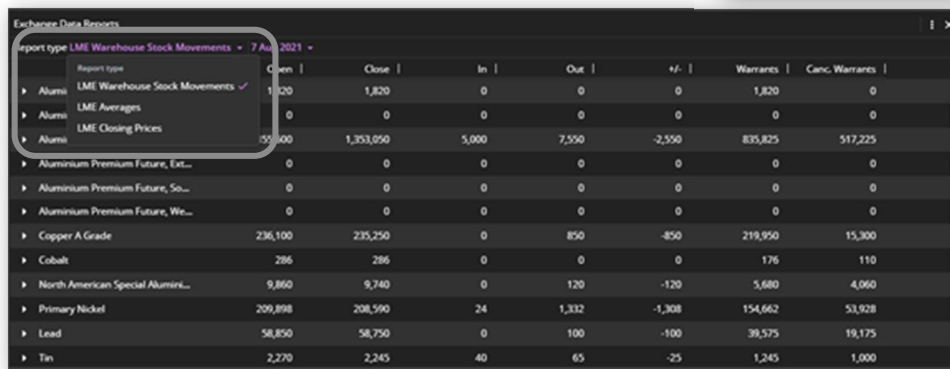
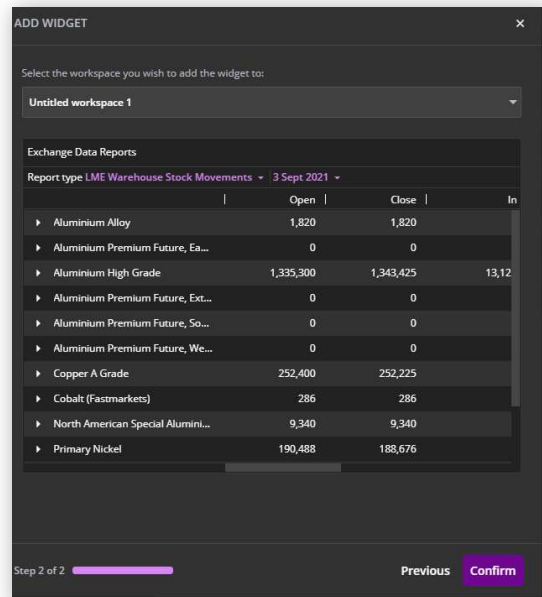
View a selection of pre-configured reports displaying data from the London Metal Exchange (LME) including:

- LME Warehouse Stocks
- LME Averages (LME Official cash prices)
- LME Closing Prices (Evening Evaluations)



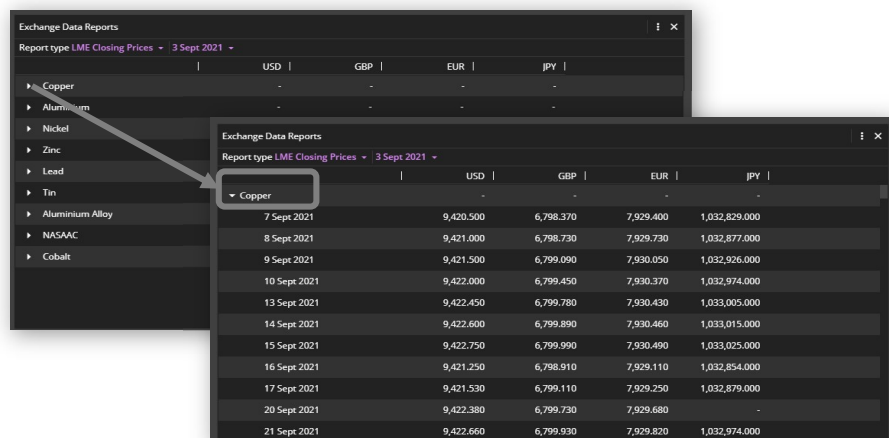
To add an Exchange Data Report widget click Add widget > Exchange Data Reports and search for the report you wish to view. Click Confirm.

Once the widget is populated, to amend the type of report click on the purple Report type as per below:



### LME Closing Price Report

On the LME Closing Prices report, click on the arrow next to each metal to display closing prices for each prompt date in each of the 4 currencies cleared by the LME.

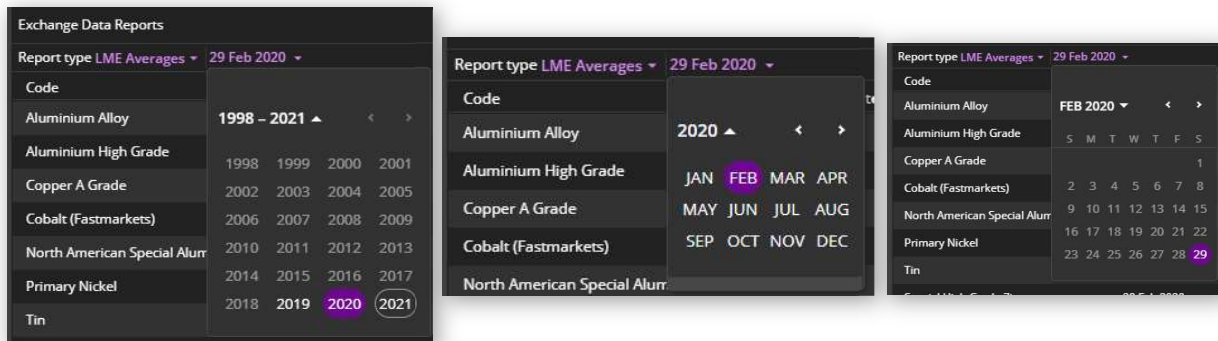


## LME Averages Report

The LME Averages report displays the LME Monthly Average Settlement Price (MASP) which is based on LME Official Cash Settlement Prices available in the month. These averages are published daily, totaled, and averaged over the number of business days in the month, resetting at the end of each month. It is stated in US dollars per metric tonne. The MASP is the settlement price for Monthly Average Futures and LME Traded Average Price Options (TAPOs) contracts.

Code	Settlement Date	Cash Bid	Cash Mid	Cash Ask	3M Bid	3M Mid	3M Ask	15M Bid	15M Mid	15M Ask
Copper A Grade	30 Sept 2021	9,340.000	9,340.000	9,340.000	9,345.667	9,345.667	9,345.667	0.000	0.000	0.000
Aluminium High Grade	30 Sept 2021	2,686.000	2,686.000	2,686.000	2,691.167	2,691.167	2,691.167	0.000	0.000	0.000
Primary Nickel	30 Sept 2021	19,466.667	19,466.667	19,466.667	19,410.000	19,410.000	19,410.000	0.000	0.000	0.000
Special High Grade Zinc	30 Sept 2021	2,983.167	2,983.167	2,983.167	2,995.333	2,995.333	2,995.333	0.000	0.000	0.000
Lead	30 Sept 2021	2,391.500	2,391.500	2,391.500	2,284.667	2,284.667	2,284.667	0.000	0.000	0.000
Tin	30 Sept 2021	33,870.333	33,870.333	33,870.333	33,412.000	33,412.000	33,412.000	31,377.667	31,377.667	31,377.667
Aluminium Alloy	30 Sept 2021	2,290.000	2,290.000	2,290.000	2,290.000	2,290.000	2,290.000	0.000	0.000	0.000
North American Special Aluminium A...	30 Sept 2021	2,338.000	2,338.000	2,338.000	2,313.333	2,313.333	2,313.333	0.000	0.000	0.000
Cobalt (Fastmarkets)	30 Sept 2021	50,501.667	50,501.667	50,501.667	50,840.000	50,840.000	50,840.000	52,710.000	52,710.000	52,710.000

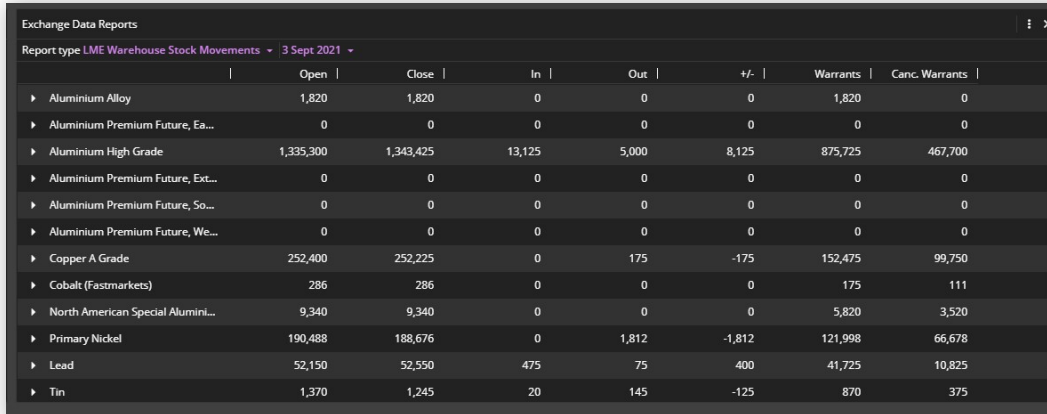
To view historic monthly average prices, click on the date drop down menu and select the year, and last day for the month you wish to view, this example shows selecting the February 2020 monthly averages:



## LME Warehouse Stocks Report

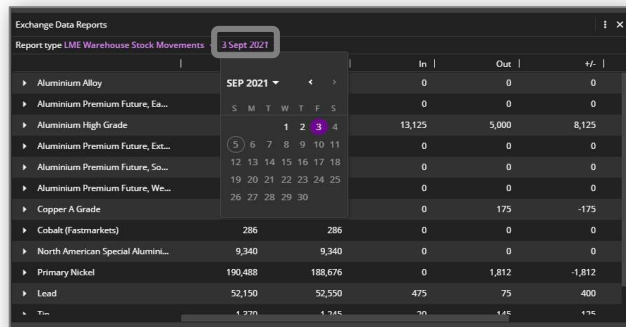
The LME Warehouse stocks report is published daily providing detailed warehouse and stock reports which include opening and closing stocks, stock movements, cancelled & live warrants across locations and metals.

By default, the report displays stock totals across all warehouses per metal. Each metal can then be expanded further to display details for each LME warehouse, then again by type of materials.



	Open	Close	In	Out	+/-	Warrants	Canc. Warrants
▶ Aluminium Alloy	1,820	1,820	0	0	0	1,820	0
▶ Aluminium Premium Future, Ea...	0	0	0	0	0	0	0
▶ Aluminium High Grade	1,335,300	1,343,425	13,125	5,000	8,125	875,725	467,700
▶ Aluminium Premium Future, Ext...	0	0	0	0	0	0	0
▶ Aluminium Premium Future, So...	0	0	0	0	0	0	0
▶ Aluminium Premium Future, We...	0	0	0	0	0	0	0
▶ Copper A Grade	252,400	252,225	0	175	-175	152,475	99,750
▶ Cobalt (Fastmarkets)	286	286	0	0	0	175	111
▶ North American Special Alumi...	9,340	9,340	0	0	0	5,820	3,520
▶ Primary Nickel	190,488	188,676	0	1,812	-1,812	121,998	66,678
▶ Lead	52,150	52,550	475	75	400	41,725	10,825
▶ Tin	1,370	1,245	20	145	-125	870	375

You can view historical data for each metal by choosing a different date on the date drop down.



	Open	Close	In	Out	+/-
▶ Aluminium Alloy			0	0	0
▶ Aluminium Premium Future, Ea...			0	0	0
▶ Aluminium High Grade			13,125	5,000	8,125
▶ Aluminium Premium Future, Ext...			0	0	0
▶ Aluminium Premium Future, So...			0	0	0
▶ Aluminium Premium Future, We...			0	0	0
▶ Copper A Grade			0	175	-175
▶ Cobalt (Fastmarkets)	286	286	0	0	0
▶ North American Special Alumi...	9,340	9,340	0	0	0
▶ Primary Nickel	190,488	188,676	0	1,812	-1,812
▶ Lead	52,150	52,550	475	75	400
▶ Tin	1,370	1,245	20	145	-125

You can also view all three different types of data report by duplicating the first Exchange Data Report widget. Click the Settings button (three dots icon in top right of the widget) and choose Duplicate Widget. A second widget appears on your worksheet, pre-populated with the same information. Click the Report type dropdown to change the warehouse location.



Report type
▶ Aluminium LME Warehouse Stock Movements ✓
▶ Aluminium LME Averages
▶ Aluminium LME Closing Prices

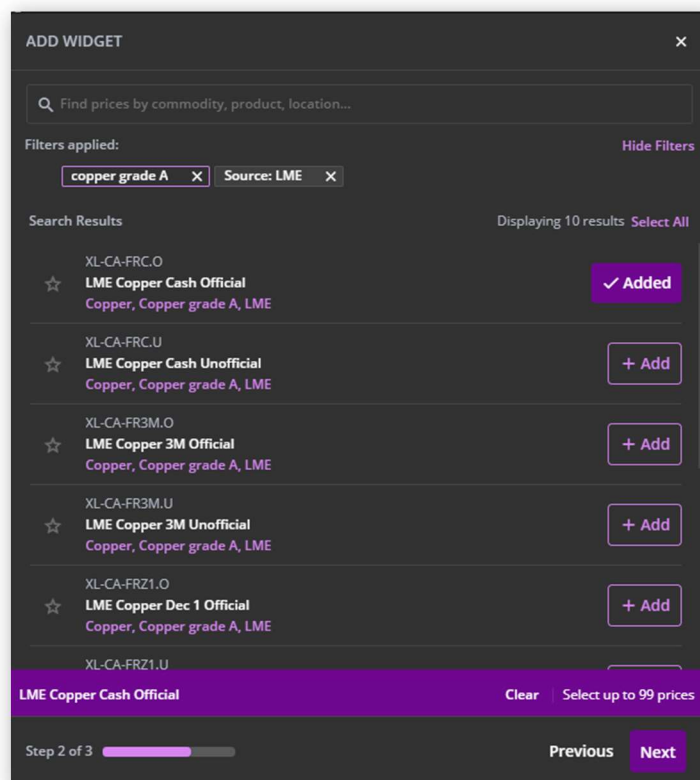


Exchange Data Reports								
Report type LME Warehouse Stock Movements ▾ 3 Sept 2021 ▾								
	Open	Close	In	Out	+/-	Warrants	Canc. Warrants	
▶ Aluminium Alloy	1,820	1,820	0	0	0	1,820	0	
▶ Aluminium Premium Future, Ea...	0	0	0	0	0	0	0	
▼ Aluminium High Grade	1,335,300	1,343,425	13,125	5,000	8,125	875,725	467,700	
▶ Amsterdam	0	0	-	-	-	0	0	
▶ Antwerp	0	0	-	-	-	0	0	
▶ Baltimore	27,250	27,250	-	-	-	18,875	8,375	
▶ Barcelona	0	0	-	-	-	0	0	
▶ Bilbao	875	875	-	-	-	0	875	
▶ Busan	3,300	3,300	-	-	-	3,275	25	
▶ Chicago	0	0	-	-	-	0	0	
▶ Detroit	11,875	11,875	-	-	-	9,125	2,750	
▶ Genoa	0	0	-	-	-	0	0	
▶ Gwangyang	81,150	80,775	-	375	-375	35,825	44,950	
▶ Hamburg	2,375	2,375	-	-	-	0	2,375	
▶ Helsingborg	0	0	-	-	-	0	0	
▶ Hull	0	0	-	-	-	0	0	
▶ Incheon	0	0	-	-	-	0	0	

## EXCHANGE PRICES IN THE MULTI PRICE TABLE WIDGET

Exchange prices (London Metal Exchange, CME Group and Shanghai Futures Exchange) can be displayed alongside physical prices in existing widgets. This means you can create your own Single Price Tile, Price Chart, Multiple Price Table and Historic Price Table widgets that include physical prices and exchange prices.

These prices can be found in the Search. For example, we can search for the LME Copper Cash Official price with these Copper prices in the Multiple Price Table. Type LME and choose "Source: LME". Next, type Copper and choose "Product: Copper Grade A". Choose LME Copper Cash Official with the code XL-CA-FRC.O Click Next, then Confirm.



The screenshot shows the 'ADD WIDGET' search interface. At the top, there is a search bar with the placeholder text 'Find prices by commodity, product, location...'. Below the search bar, the filters applied are 'copper grade A' and 'Source: LME'. The search results are displayed as a list of items, each with a star icon, a code, a name, and a description. The first item is 'XL-CA-FRC.O LME Copper Cash Official' with a '✓ Added' button. Other items include 'LME Copper Cash Unofficial', 'LME Copper 3M Official', 'LME Copper 3M Unofficial', and 'LME Copper Dec 1 Official'. At the bottom, there is a 'Clear' button and a 'Select up to 99 prices' link. The progress bar shows 'Step 2 of 3' and 'Next' buttons.

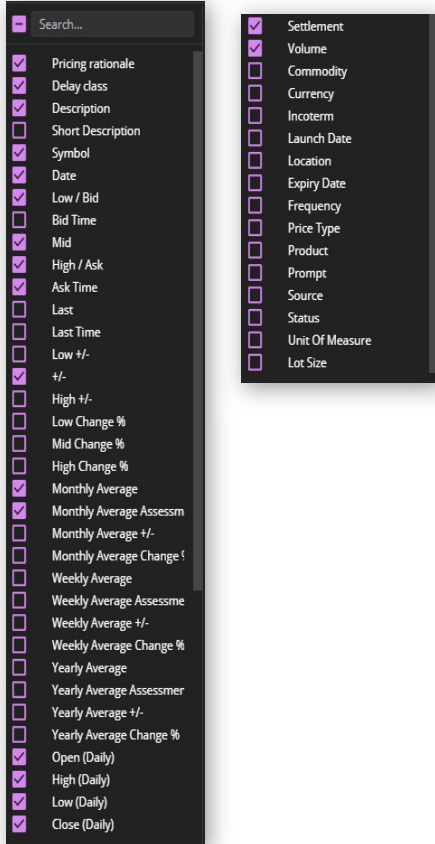
You can see that the fields for the mix of prices combine when an exchange price is added. For example, the fields for these copper prices change to Low/Bid and High/Ask when the copper exchange price is added, as shown below. Combining the fields in this way will align fields for physical and exchange prices, maximizing space in the widget and your workspace and removing any blank spaces.

Description	Symbol	Date	Low/Bid	Mid	High/Ask	+/-	Settings
Copper grade A cathode premium, cif Rotterdam, \$/tonne	MB-CU-0369	24 Nov...	40.00	45.00	50.00	0.00	
Copper grade A cathode premium, cif Shanghai, \$/tonne	MB-CU-0403	30 Nov...	40.00	50.00	60.00	2.50	
Copper grade A cathode premium, in-whs Shanghai, \$/ton...	MB-CU-0405	30 Nov...	45.00	56.00	67.00	2.50	
LME Copper Cash Official	XL-CA-FRC.O	30 Nov...	7,674.50	7,674.50	7,674.50	-	

### Viewing Streaming Delayed or Live exchange prices in the Multi Price Table

Depending on your access you may be entitled to view previous day, delayed or live exchange prices in the Multi Price Table widget. When a price changes in real time, it flashes either green (up tick) or red (down tick) from the previous price update.

Description	Bid Time	Bid	Ask	Ask Time	Last	Last Time	Open (D...)	High (D...)	Low (Daily)	Volume
COMEX Gold 1M (Sep 21)	10:50	1,823.20	1,824.00	10:50	1,823.30	09:35	1,825.70	1,825.70	1,823.30	3
COMEX Gold 2M (Oct 21)	10:50	1,823.80	1,825.20	10:50	1,823.20	10:33	-	-	1,823.20	433
COMEX Gold 3M (Nov 21)	10:49	1,824.90	1,825.20	10:50	1,834.20	03 Sept	-	-	-	7
COMEX Gold 4M (Dec 21)	10:50	1,826.10	1,826.20	10:50	1,826.20	10:50	-	-	1,824.90	30046
COMEX Gold 5M (Feb 22)	10:50	1,828.10	1,828.30	10:50	1,827.80	10:46	1,830.30	1,831.10	1,827.80	1117
COMEX Gold 6M (Apr 22)	10:50	1,829.80	1,830.00	10:50	1,829.60	10:46	1,832.80	1,833.80	1,828.80	30
COMEX Gold 7M (Jun 22)	10:50	1,831.20	1,831.50	10:50	1,831.10	10:21	1,833.70	1,834.20	1,831.10	13
COMEX Gold 8M (Aug 22)	10:50	1,832.40	1,832.70	10:50	1,824.10	03 Sept	-	-	-	2
COMEX Gold 9M (Oct 22)	10:50	1,833.20	1,834.30	10:50	1,830.00	03 Sept	-	-	-	1
COMEX Gold 10M (Dec 22)	10:50	1,835.20	1,835.60	10:50	1,838.50	00:08	1,838.50	1,838.50	1,838.50	1



There are additional fields available for the streaming exchange prices, which are available to select in Settings such as Bid Time, Ask Time, Expiry Date, Prompt, Volume, Settlement and Open (Daily), High (Daily), Low (Daily) and Close (Daily).

## EXCHANGE PRICES IN THE HISTORIC DATA TABLE WIDGET

LME Copper 3m Official Price and Copper Premia

1Y | 1 Apr 2019 - 1 Apr 2020 | Actual | Settings

	XL-CA-FRC.O	MB-CU-0369	MB-CU-0403	MB-CU-0405
Date	Mid	Mid	Mid	Mid
01 Apr 2020	4797	42.5	60.5	63.5
31 Mar 2020	4797	42.5	60.5	61.5
30 Mar 2020	4763	42.5	59.5	61.5
27 Mar 2020	4774	42.5	58.5	61.5
26 Mar 2020	4775.5	42.5	57.5	61.5
25 Mar 2020	4754	42.5	57.5	61.5
24 Mar 2020	4789.5	42.5	57.5	61.5
23 Mar 2020	4617.5	42.5	57.5	61.5
20 Mar 2020	4854.5	42.5	57.5	61.5
19 Mar 2020	4684.5	42.5	57.5	61.5
18 Mar 2020	4860	42.5	57.5	61.5

Physical and exchange prices can be aligned in the same Historic Data Table widget. The exchange prices and physical prices align side by side. For physical prices which do not price daily the table "carries forward" prices in grey between assessment date to align with daily exchange prices.

## EXCHANGE PRICES IN THE PRICE CHART WIDGET



You can add exchange prices which only update once daily such as the LME Officials or Unofficials to the Price Chart widget in the same way as other widgets.

Click the “Widget action” button, then “Edit Widget”. Use the Search to find LME Aluminium official prices by choosing Source first.

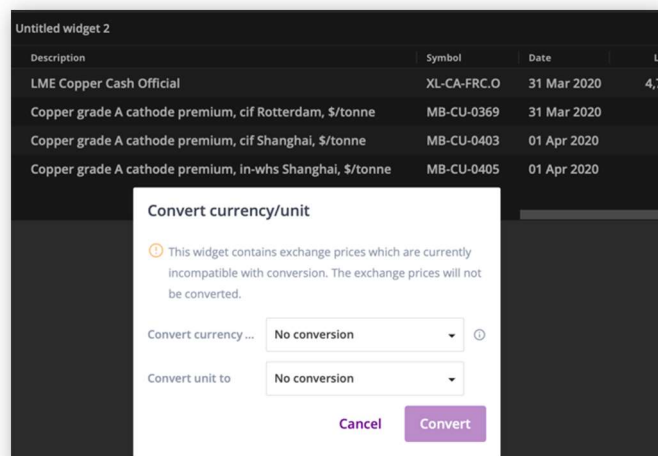
Type “LME” and select the filter “Source:LME”.

Then for the Commodity, type "Aluminium" and select the filter “Commodity: Aluminium”.

The example above shows how you can add the LME Aluminium Cash Official price to instruments already displaying on the chart.


To chart exchange prices which have an Open, High, Low and Close price (and will provide intra-day and historical prices depending on your level of access) please use and refer to the Live Chart widget section.

Please note, it is not yet possible to export to Excel with formulae for exchange prices. Similarly, exchange prices cannot be converted to different currencies/units of measure. If you try to change the currency/unit in this Multi Price Table, for example you will encounter this warning message.




Description	Symbol	Date	Lo
LME Copper Cash Official	XL-CA-FRC.O	31 Mar 2020	4,7
Copper grade A cathode premium, cif Rotterdam, \$/tonne	MB-CU-0369	31 Mar 2020	
Copper grade A cathode premium, cif Shanghai, \$/tonne	MB-CU-0403	01 Apr 2020	
Copper grade A cathode premium, in-whs Shanghai, \$/tonne	MB-CU-0405	01 Apr 2020	

Multi Price Copper Exchange Price and Cash GBP / Dry Metric Ton Unit

Description	Symbol	Date	Low/Bid	Mid	↓ H
 LME Copper Cash Official	XL-CA-FRC.O	31 Mar 2020	4,797.00	4,797.00	4,7
Copper grade A cathode premium, in-whs Shanghai, \$/tonne	MB-CU-0405	01 Apr 2020	45.875196	51.106...	56.
Copper grade A cathode premium, cif Shanghai, \$/tonne	MB-CU-0403	01 Apr 2020	42.655884	48.692...	54.7
Copper grade A cathode premium, cif Rotterdam, \$/tonne	MB-CU-0369	31 Mar 2020	32.26844	34.285...	36.3

## EXCHANGE PRICES IN THE LIVE CHART WIDGET



**Live Chart**  
View the intraday chart for an exchange data instrument

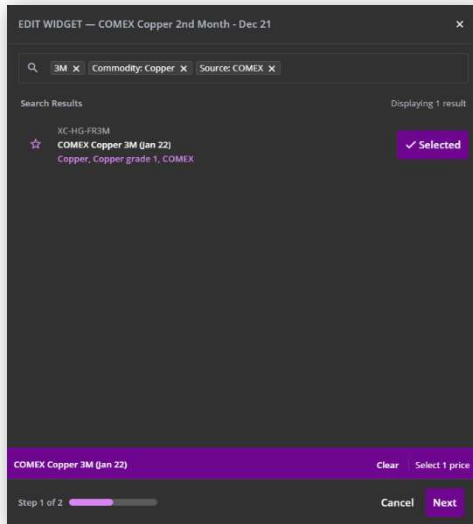
Visualizing trends and intra-day price movements is critical to monitoring and analyzing your markets. The Live Chart widget enables you to view historical and intra-day data for a single exchange price with open/high/low/close prices.

Chart either a line, bar, candle or mountain chart for one price, displaying the data in intervals from 5 minutes up to 1 month with volume data (where available) in the sub-chart at the bottom.



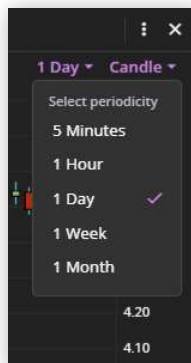
## Searching and adding a symbol to the Live Chart

To add a Live Chart widget click Add widget > Live Chart and search for the price you wish to plot in the chart. To search for the COMEX Copper 3 Months symbol, type COMEX and choose Source: COMEX. This will start to filter the symbols for this exchange. Type Copper and choose Commodity: Copper. Finally using a keyword search type 3M for the 3 months prompt date and find the code for COMEX Copper 3 months.



You can only add one symbol at a time into the Live Chart widget.

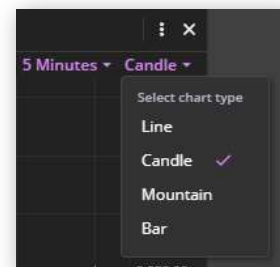
## Edit the periodicity displayed in the chart



To change the periodicity of the chart, click the drop-down menu in the top right of the widget. Each candle represents 5 minutes of data. In this case we can click on the 5 minutes dropdown and change to any of these other periods.

## Amend the type of chart displayed

To change the type of chart which is displayed, click the chart type menu at top right. The options are bar, candle, line and mountain.



**Candle chart** – here each candle represents the open, high, low and close of the period. The high is represented by the vertical line, which extends above the top of the body to show the highest price. The low is represented by the lowest point on the vertical line. The body of the candle represents the open and close. If the body is filled in in green, then the price has risen that day so the open would be the lowest line of the box and the close would be top line. Red represents the price having a net decline so the top line is the open and the bottom line would be the close.



The body of the candle represents the open and close. If the body is filled in in green, then the price has risen that day so the open would be the lowest line of the box and the close would be top line. Red represents the price having a net decline so the top line is the open and the bottom line would be the close.

**Bar chart** -this is a similar display to candle charts but does not have a body filled in. The bar represents the period selected and the vertical line represents the high and low of that price. The left-hand horizontal line represents to opening price and the right hand represents the closing price.



**Line chart** - represents the price history for the period selected.



**Mountain chart** - displays the same as a line chart but shaded to the bottom of the X axis for visual effect.



**View price data for each interval**

When hovering over a price, the chart shows a display box with details of the price at that interval.



**Resizing the chart**

Change the size of the chart by moving the mouse scroller up to see more data, and down to zoom in on less data.

Click and drag the mouse to move forwards and backwards in time.

**FURTHER HELP**

If after reading these instructions you have further questions about how to use the Fastmarkets Dashboard, please contact our Customer Success teams or for access/order queries our Client Services team:

- **Europe, Middle East and Africa: +44 20 3855 5581**
- **Asia: +65 31 633 458**
- **Americas: +1 708 329 2641**
- **Customer Success Email: [customersuccess@fastmarkets.com](mailto:customersuccess@fastmarkets.com)**
- **Client Services Email: [client.services@fastmarkets.com](mailto:client.services@fastmarkets.com)**